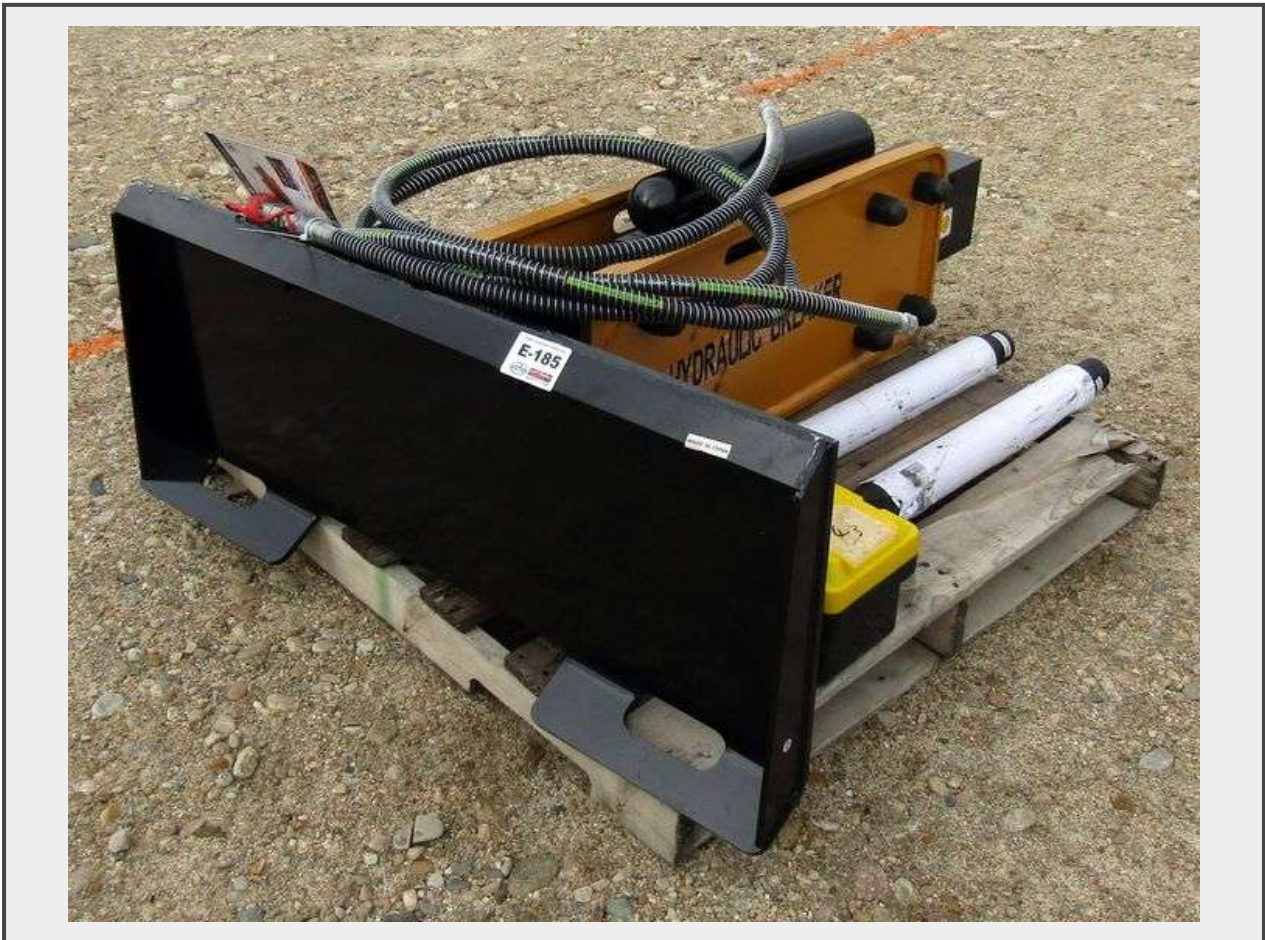


Sale Name: END OF YEAR FARM & HEAVY EQUIPMENT 2025

LOT 4577 - E-185 Wolverine Skid Steer Concrete Breaker



LOCATION ROW 4

Description

UNUSED

Operating pressure: 1,566-3000 PSI

750 ft. lb.

2 points

LOT LOCATION: ROW 4

Quantity: 1



<https://bid.pickettauctions.com/>